

Combination Fire/Smoke Damper • 1½ Hr. Rated • Single Thickness Blade • Leakage Class II • 250°F or 350°F Rated • Out-of-Barrier • Galvanized Steel

Standard Construction and Materials

FRAME: 5½" x 7⁄8" x 16 GA. galvanized steel hat channel. Flat 16 GA. galvanized steel head and sill for maximum free area on dampers less than or equal to 13" high.

BLADES: 16 GA. galvanized steel single thickness, parallel action.

AXLES: Plated solid steel stub.

BEARINGS: Oil impregnated bronze.

LINKAGE: Plated steel angle and crank plates with stainless steel pivots, in-jamb type or on-blade type.

STOPS: 18 GA. galvanized steel angles at head and sill.

BLADE SEALS: Silicone.

JAMB SEALS: Stainless steel.

SLEEVE: 20 GA. galvanized steel by 15" long (1½" grille clearance) or 17" long (3½" grille clearance) with 13⁄16" front flange.

INSULATION: Factory installed 0.2" thick intumescent insulation on top and both sides (vertical mount) or all four sides (horizontal mount).

CAULKING: Hardcast ironrip 601 or UL-listed equivalent.

ACTUATOR: Electric with heat response device (EHRD) or pneumatic with heat response device (PHRD). Factory-installed for Power-Open/Spring-Close (fail close) operation. Internally mounted and accessible from grille side, or mounted externally or internally for continuous duct applications.

FINISH: Mill.

Options

Integral Dual Position Indication (IDPI) Switches

Sensotherm Re-Openable Heat Response Device (ESOT) for electric actuators

Sensotherm Re-Openable Heat Response Device (EPOT) for pneumatic actuators

Model SM-501 flow-rated smoke detector

- Shipped loose

Model 2D51 no-flow smoke detector (12" minimum damper height)

Copper tubing (for pneumatic actuators)

Tab-lock retaining angles - 1 or 2 Sets

Stainless steel bearings

Sleeves of various depths and gauge thickness (restriction apply)

Round or oval transitions

Short-width (less than 10") and/or short-height (less than 10") transitions

Notes

1. Damper frames are provided approximately ¼" undersized. The addition of a sleeve and insulation will increase the size of the assembly. See SI-FAGM or SI-FACD for sizing openings.
2. Dampers smaller than minimum frame size require a transition. Refer to SD-TRFS. When transitioned on one-side only (which will be a damper supplied with a transition on the non-jackshafted side only), the grille size should be selected to match the damper frame size, not the transition collar size.
3. Damper with smoke detector must have a minimum sleeve of 16" (1½" setback) or 18" (3" setback).
4. Dampers for horizontal installation can only be mounted in a fire barrier constructed of masonry/concrete materials.

Damper Sizes

2000 fpm, 4 in.wg			
Orientation	Hor & Vert	Horizontal	Vertical
Panel	Min Panel	Max Panel	Max Panel
Rectangular	10"W x 10"H (10"W x 10"H frame)	36"W x 42"H	36"W x 42"H
Round	8" dia. (10"W x 10"H frame)	34" dia.	34" dia.
Oval	8"W x 8"H (10"W x 10"H frame)	34"W x 40"H	34"W x 40"H

For handwritten orders, use the schedule block on page 2.

In the interest of product development, Cesco Products reserves the right to make changes without notice.

UNDERWRITERS LABORATORIES INC.®

CLASSIFIED DYNAMIC FIRE AND SMOKE DAMPER

FIRE RESISTANCE RATING 1½ HR

LEAKAGE RESISTANCE CLASS II

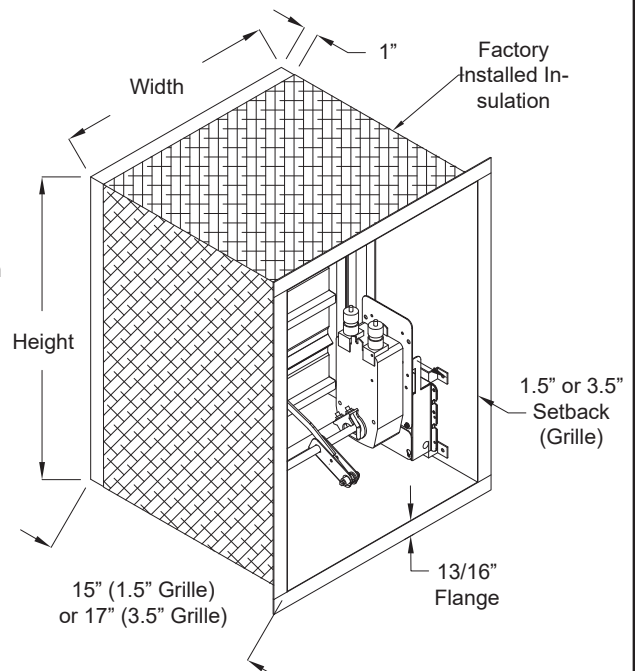


FILE # R6462



This combination fire/smoke damper meets the construction and performance requirements of:

- Underwriters Laboratories Inc. Standards 555 and 555S
- National Fire Protection Association Standards 80, 90A, 92, 101, 105
- ICC's International Building Code
- New York City MEA Listing #111-99-M
- California State Fire Marshal Listing #3225-1328:118
- Underwriters Laboratories Inc. Approved for dual direction airflow and dynamic conditions.
- Underwriters Laboratories Inc. Classified for use in fire resistive ratings of less than 3 hours.
- Underwriters Laboratories Inc. Classified for use in smoke control systems for Leakage Class II and 250°F or 350°F.
- Actuators must be arranged to operate automatically, must fail closed upon loss of power, and must be controlled by a smoke detection system.



Combination Fire/Smoke Damper • 1½ Hr. Rated • Single Thickness Blade • Leakage Class II • 250°F or 350°F Rated • Out-of-Barrier • Galvanized Steel

Operational Ratings

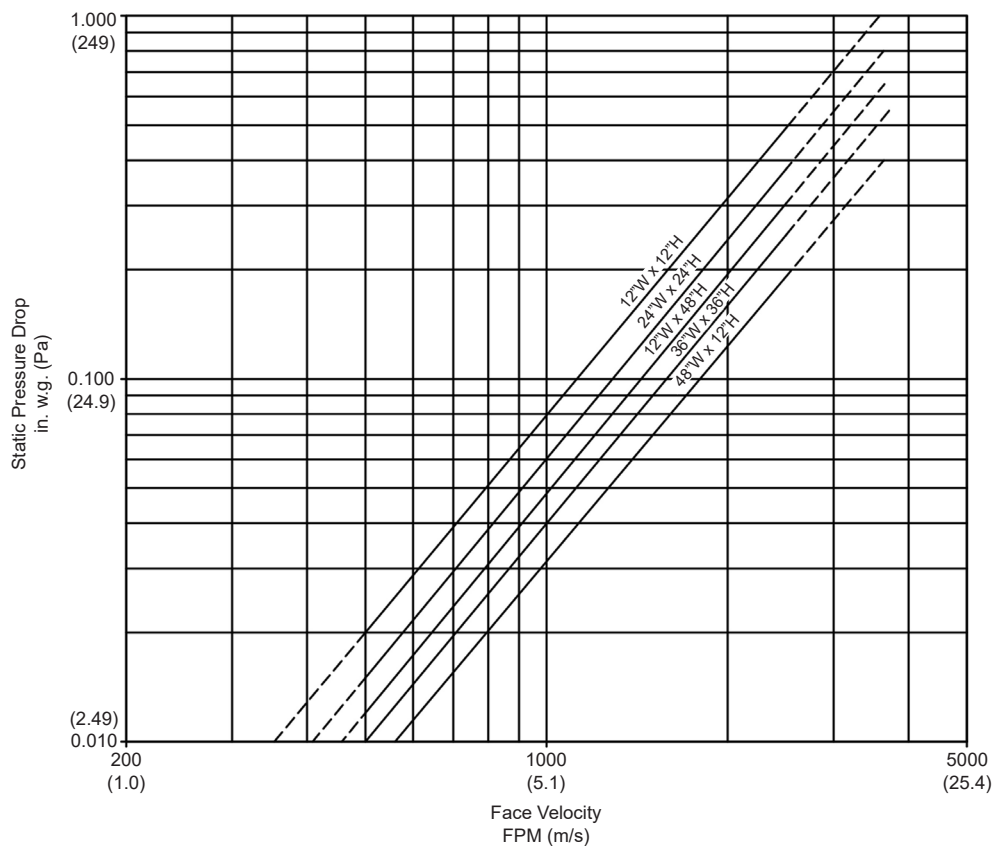
Maximum Differential Pressure: 4 in. w.g.
Maximum Face Velocity: 2000 fpm

Leakage Ratings

UL Leakage Class II
20 cfm per sq. ft. maximum @ 4 in. w.g.

Pressure Drop

The pressure drop data shown below is based on laboratory conditions. The test setup does not take into account elbows or other duct fittings that are part of every actual duct system. The configuration of the actual duct system immediately upstream and downstream of the damper often contributes more pressure loss than the damper itself.




This product was tested
in accordance with AMCA
Standard 511.

Intake air converted to
standard air density.

Sizes listed on this chart exceed
the size limitations of the CG2G.
These sizes are based on the
model CG2 data.

AMCA Figure 5.3

										
Item #	Qty	Damper Size	Horizontal	Vertical	250°F	350°F	Velocity	Pressure		
			Orientation		Temp. Rating		Operational Rating		Union Made	
Arch. / Eng.:					EDR:		ECN:		Job:	
Contractor:										
Project:					Date:		DWN:		DWG:	

Combination Fire/Smoke Damper • 1½ Hr. Rated • Single Thickness Blade • Leakage Class II • 250°F or 350°F Rated • Out-of-Barrier • Galvanized Steel

Installation Configurations

<u>CG</u>	<u>2</u>	<u>G</u>	<u>2</u>
I	II	III	IV

I. Base Model

CA = Airfoil Blade Fire-Smoke Damper
 CG = Single-Thickness Blade Fire-Smoke Damper
 15MA = Airfoil Blade Dynamic Multi-Blade Fire Damper
 15MD = Single Thickness Blade Dynamic Multi-Blade Fire Damper
 15MS = Single Thickness Blade Static Multi-Blade Fire Damper

II. Leakage Class (Fire-Smoke Dampers Only)

1 = UL Class-I Leakage
 2 = UL Class-II Leakage
 Blank = Leakage Class Not Applicable (Fire Dampers)

III. Installation Configuration

D = Out-of-barrier Horizontal Grille Application, 3½" Grille Clearance
 E = Out-of-barrier Horizontal Grille Application, 1½" Grille Clearance
 F = Out-of-barrier Vertical Grille Application, 3½" Grille Clearance
 G = Out-of-barrier Vertical Grille Application, 1½" Grille Clearance
 J = Out-of-barrier Horizontal, Continuous Duct
 K = Out-of-barrier Vertical, Continuous Duct

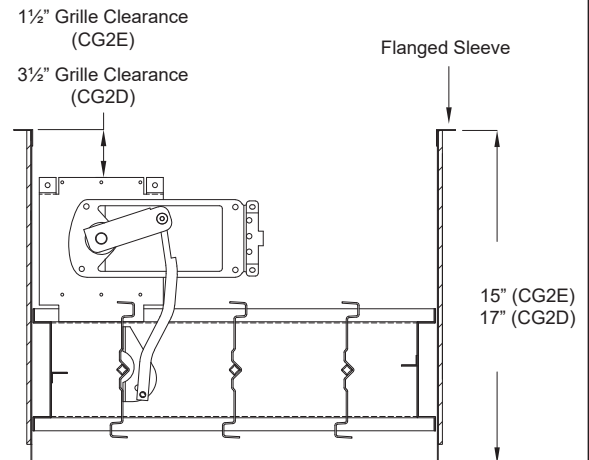
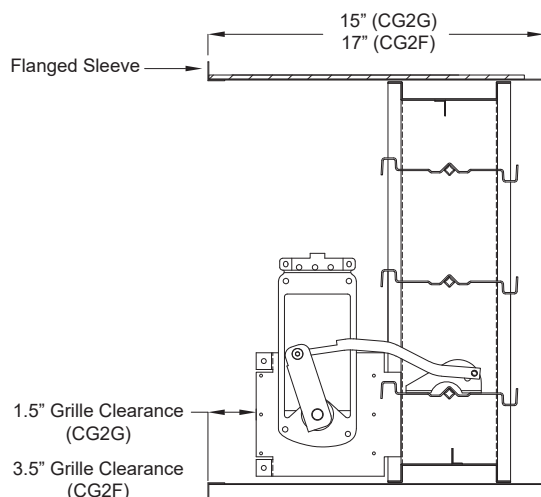
IV. Temperature Rating (Fire-Smoke Dampers Only)

2 = 250°F
 3 = 350°F
 Blank = Temperature Rating Not Applicable (Fire Dampers)

NOTE

- All Installations must be in accordance with SI-FAGM or SI-FACD
- Horizontal installations are only approved for masonry/concrete.

Grille Access Applications

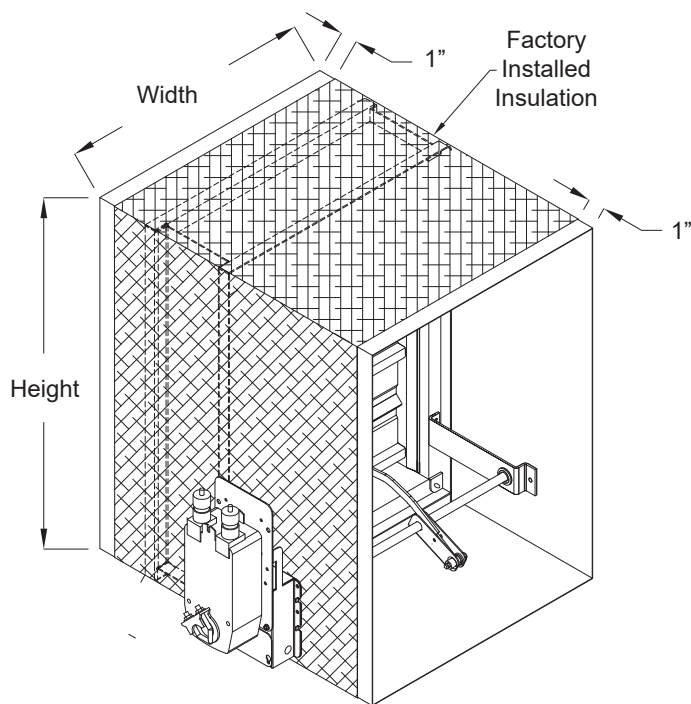
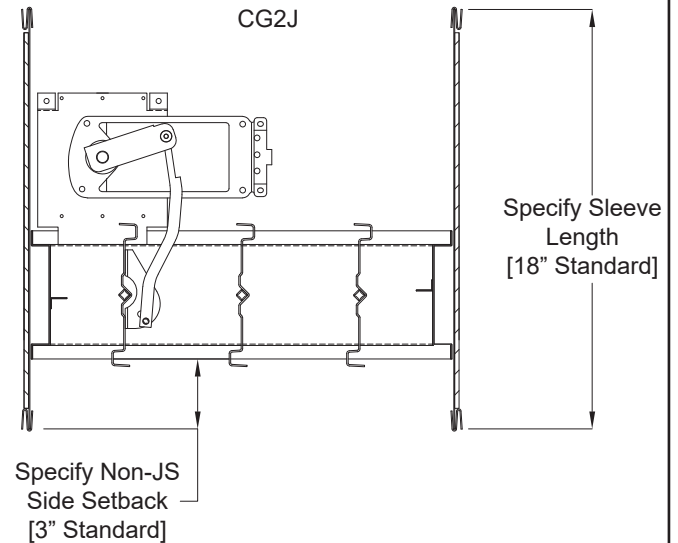
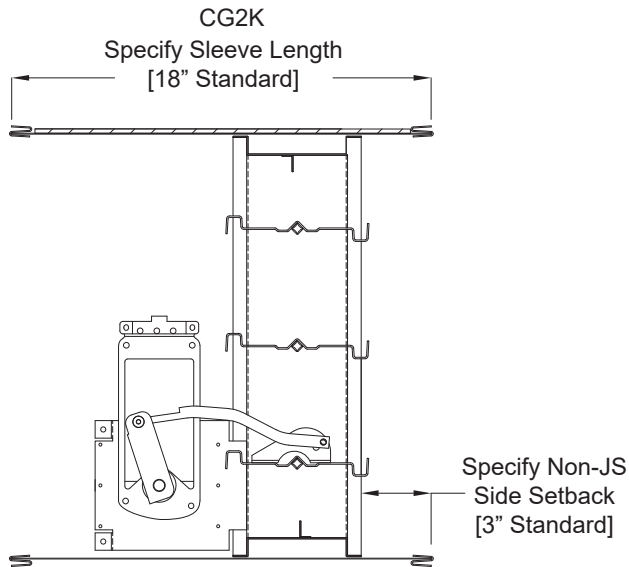


Combination Fire/Smoke Damper • 1½ Hr. Rated • Single Thickness Blade • Leakage Class II • 250°F or 350°F Rated • Out-of-Barrier • Galvanized Steel

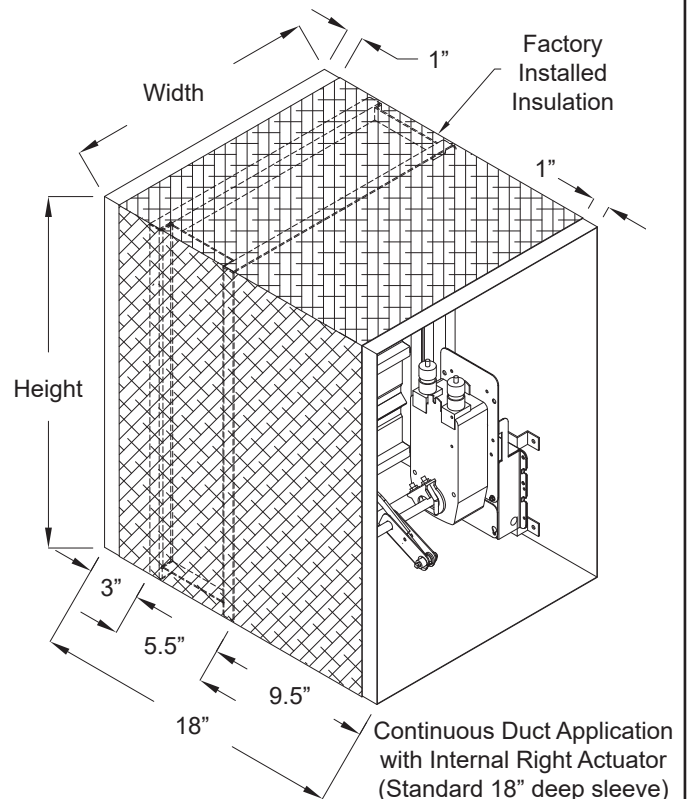
NOTE

- All Installations must be in accordance with SI-FAGM or SI-FACD.
- Horizontal installations are only approved for masonry/concrete.

Continuous Duct Applications



Continuous Duct Application
with External Left Actuator



Continuous Duct Application
with Internal Right Actuator
(Standard 18" deep sleeve)